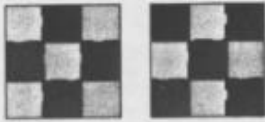


The Flower Patch

This is not my idea.



The Magic 9-Patch Block

You get a 9-patch block with dark corners, and another 9-patch with light corners.

1. Start with two squares that are 1 1/2" larger than you want the finished 9-patch blocks to be. One square should be light and the other dark. For example: 6" finished 9-patch blocks would require 2 7 1/2" squares.



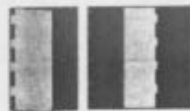
2. Sew the 2 squares together on two opposite outer edges, with the light color on top.



3. Cut the sewn squares into 3 equal strips, from one un-sewn edge to the other un-sewn edge. For 6" finished 9-patch blocks, each of the strips should be 2 1/2" wide. You will have 2 strips with a seam and two single strips from the center without a seam.



4. Take the dark strip and sew it to the side of the light / dark set, making a dark / light / dark set.



5. Take the light strip and sew it to the side of the dark / light set, making a

light / dark / light set.

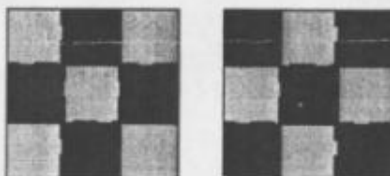


6. Press the seams toward the dark strip on both sets. Be sure to press correctly so the seams will butt up against each other when sewn together.
7. Place each set right sides together so the strips in each set are horizontal to you, repeating steps 2 – 6.



8. Be sure to press correctly so the seams will butt up against each other when other blocks are sewn together with your 9-patch block.



Now you have 2 9-patch blocks!



- Home
- Redwork
- Links
- Patterns & Projects
- Recipes
- Family Album
- Boring Stuff

This website is owned and designed by Linda Lowers. Nothing is copyrighted unless otherwise noted. Some of the graphics like the spools in the left hand menu, I created. If you want them, help yourself to them and to anything you want or need, unless it is copyrighted by someone else, and then please, please, please get their permission!
linda@lowers.com

Some of my graphics came from:

| | | |
|---|--|---|
|  |  |  |
|---|--|---|