

The Circular

FCQ Officers

President

Sharon Rhoton

Thursday

Vice President

Margaret Minton

Secretary

Margo Cramer

Treasurer

Peg McClelland

Monday

Vice President

Nancy Evans

Secretary

Kenzie Preston

Treasurer

Anne Kelly

Special Quilt Show 2010 Wrap-up Edition

The 2010 Quilt Show was a great success, and from our standpoint it was due to the many members who volunteered lots of time to make it so. Special thanks go to the extra effort of the various committee chairmen who coordinated the activities that made our show so special: Jeanette Cocker, Shelia Riess, Peg McClelland, Carol Roberts, Nancy Meier, Sandy Schlossberg, Susan Mann, Sherrin Murray, Caren Fitzpatrick, Diana Morraye, Alka Mital, Carol Petranek, Jane Scott, Anne Kelly, Barbara Buchanan, Beth Bohac, Kenzie Preston, Julia Graves, Sandy McDonald, Margo Cramer, Mary McCahill and of course – Susan Adams (great food!).

The main feedback we heard from attendees was on the quality of work that we as a group presented. We really are talented! The new creative zigzag layout, along with all the extra decorations, was labeled "a great display" by many of our visitors. The demos were diverse, informative, and well-attended. The Silent Auction displayed many beautiful creations and generated a tidy sum to help support our Education program for the next two years. The Peddlers' Table, renamed to Peddlers' Lane, produced many a good bargain. We had more vendors than ever before, and they offered a nice variety of merchandise. The net proceeds from the show will become FCQ's operating budget for the next two years.

Our raffle quilt "Peaceful Vineyards" was spectacular, thanks to Shelia's design and Peg's special organizational talents. Mary Santee of Marieta, NY was the winner this year. It's difficult to let go of this special quilt, but we know it was well appreciated and will find a good home away from home.

Special thanks go to Eleanor Howe, who is probably still dreaming of all the money she counted. Woody deserves many, many thanks for all that he did to keep us going, including his efforts to provide the new food tent, which was well received by visitors and members alike. As always, the church staff members were gracious about the disruption that we know our show causes every other year.

It was a real treat working with so many talented people. Thank you one and all!

Irma Bast and Carolyn May

QUILT SHOW 2010 FAQ'S

How many quilts were displayed in the show? Approximately 306 quilts of all sizes were hung.

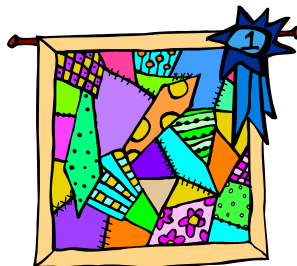
How did the Silent Auction do? Members donated 117 items to the Silent Auction and \$3,295.00 was raised for FCQ's education programs.

What about the Peddlers' Lane? Total sales were \$4,372.00, and 10% (\$437.20) went to FCQ. There were 36 member peddlers. Most of the items were under \$5, and the most expensive item sold was \$75. Many thanks to the 300+ purchasers who made this such a success.

Was this a record number of vendors? We had nine vendors this year, the most that we have had in at least the last five shows. Total income from renting out the space was \$1,750. All the vendors were happy with the amount of traffic throughout the show, and they especially liked the help our volunteers provided and (of course!) the food.

Did the raffle quilt sales do well? Members did a great job selling raffle tickets, and we brought in over \$6,000 in ticket sales.

Overall, how much money did we net? The 2010 Quilt Show netted \$10,910.00 for the FCQ general fund. Funds will be used over the next two years.



ANNOUNCEMENTS

Please note: The two summer editions of the newsletter will not be mailed to members. Electronic copies of the newsletter will be available via email and on the FCQ web site. Print copies will be available at meetings.

THERE WILL BE NO MONDAY EVENING MEETING ON JULY 5TH

NO FCQ MEETINGS ON JULY 26TH OR JULY 29TH BECAUSE OF VACATION BIBLE SCHOOL

Summer Challenge: The FCQ Project Linus Quilt Challenge has begun. A big thank you to everyone who picked up their mystery fabric packages at the June meetings. If you are interested in participating in this worthwhile challenge, see Stephanie Sanidas at an upcoming meeting. There are still a few mystery fabric bags available. Our finished quilts will be displayed during Show and Tell on September 20 & 23, 2010 and then donated to Project Linus, Howard County chapter.

Bus Trip Reminder: There are two more bus trips available for 2010. On September 17 we will be going to the Pennsylvania Quilt Extravaganza in Oaks, PA. (<http://www.quiltfest.com>). On October 15 we will be doing a shopping trip to Pennsylvania. The trips are on Fridays and leave from the Park and Ride in front of the church at 7:30 a.m. sharp. Costs of the trips are \$40 per person/per trip. The cost includes the tip for the bus driver and your ticket to the show. The shopping trip includes your lunch at Shady Maple. Payment is due for the September trip by mid-August and for the October trip by mid-September. Contact Sandy Lynch (D) or Sheri Thompson (N) to put your name on the list.

Betty Kilroy Birthday Party for July

02 Debra Gabel
02 Sherrin Murray
03 Dawn Stewart
05 Misha Bernard
06 Irma Bast
06 Peg Burkhard
11 Susan Greer
15 Patty Stenpeck
17 Caren Fitzpatrick
18 Peggy Duke
19 Gudrun Huden
20 Nina Godfrey
21 Hillary Fay
23 Mary Anderson
25 Susan Bailey
31 Becky Hassell

Calendar

July 1 Thursday Love Quilts
July 5 NO Monday meeting
July 10 Board meeting with new officers - all members are welcome to attend (9 am)
July 12 Monday Love Quilts
July 26 NO Monday meeting
July 29 NO Thursday meeting

