

The Circular

President's Message

Today as I am typing this I have robins and finches and a Carolina Wren at the bird feeder, in addition to all the birds that I have been watching all winter. I am so glad that Spring is here!

On March 18 my husband and I attended a concert by Celtic Women at the Hippodrome. On the way home we were talking about the music and Ireland and he suggested that I look into the community of Irish immigrants who moved into West Virginia. Perhaps they had brought Irish quilting to the New World. So, I went back to the Internet. I did not find anything specific to quilting by the Irish women, but there is a book out about quilts by West Virginia quilters. ("West Virginia Quilts and Quiltmakers" by Fawn Valentine. I guess I need to make a trip to the library.) Next I decided to look for information on Celtic Quilting. There are a lot of books of patterns for Celtic knots, etc. but I didn't really find anything specific to the history of this type of quilt. However, I did find a video clip on Karen Combs web site (www.Karencombs.com) that shows how to make a Celtic knot quilt with just two different pieced blocks. If you have always been a little apprehensive about starting a Celtic Quilt, you should check this out. You don't have to be able to do fine appliqué work to make a Celtic quilt.

FCQ Officers

President
Peg McClelland

Thursday

Vice President
Nancy Meier
Secretary
Mary McCahill
Treasurer
Eleanor Howe

Monday

Vice President
Kenzie Preston
Secretary
Jane Scott
Treasurer
Jeanette Cocker

I decided to go a little more generic and I did find a couple of good web sites as I was doing this search. One is www.quilthistory.com. It has a lot of interesting general information and links to other sites.

Since Celtic quilting was not panning out, I decided to look up Irish Chain quilts. That led me to an article at www.Womentalk.com. It quotes quilt historian Barbara Brackman, stating that the

Contd next page

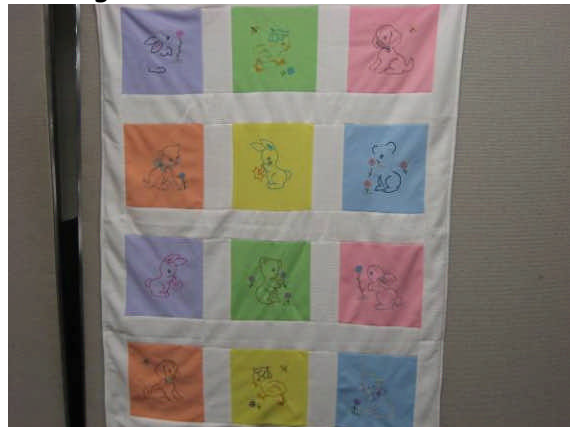
Contd from previous page

Irish Chain pattern was most likely developed in the USA in the early 1800s. And, a more recent, similar pattern used in Ireland is called "American Chain". So, not Irish at all.

While I was at that site, I checked out an article on Log Cabin quilts. (I just finished my O'Tannenbaum quilt, which has at least a gazillion 1?" logs. I have sworn never to make another log cabin quilt.) This article states that, even though most quilters think of the Log Cabin as the "quintessential American design" from our westward migration, it is not. It has been around for thousands of years. There are pictures of Egyptian mummies wrapped in linen dyed with the log cabin design.

I went on to read the article on the quilt revival that has taken place since 1960. This article mentioned using double knits in quilts. I had forgotten that my son, who was born in 1977, had a double knit quilt. It was made by my mother and my grandfather. (He did the embroidery.) I have included a picture. Certainly not the softest quilt, but it has worn like iron! Thank goodness we have come a long way since those days!

Although I never did answer the original question about Irish immigrants and their influence on our quilting tradition, I did have fun doing this research.



Peg

PARKING

From Peg McClelland, President:

Cars parked on both sides of the road mean that emergency vehicles are unable to get through. The church administration reminds everyone to keep the road clear. Once all of the parking spaces are full, we can park on the right side of the road. **No one should ever park on the left side.** They have also asked that we not park in the spaces labeled for church staff, and that we refrain from parking on the grass.

FCQ had a number of events in recent weeks that have meant a much higher than usual attendance at meetings. There were more cars than parking places in the church parking lot. There are always spaces available in the Park and Ride across from the church. Please park there if the other legal spots are taken.

Thanks for your cooperation.

SLATE OF OFFICERS PROPOSED FOR NEXT YEAR

Here is the proposed slate of officers for the elections scheduled for May 18 and May 21:

President Sharon Rhoton

Vice Presidents : Nancy Meier (D), Kenzie Preston (N)

Secretary: Mary McCahill (D), Jane Scott (N)

Treasurer: Eleanor Howe (D), Jeanette Cocker (N)

Nominations are still open if you wish to nominate from the floor. Many thanks to those who have accepted the nominations.

2009 BUS TRIPS

Calling all Travelers -- We have 3 great bus trips for 2009

* For all who have signed up for the April 3rd bus trip to Lancaster please be in the Park and Ride in front of the church by 7:15 so we can get loaded and leave by 7:30 a.m. If anyone else wants to go on this trip please get in touch with Glenda Kruger.

*Friday, September 18 is our trip to the PA National Quilt Extravaganza at Valley Forge. The cost is \$40 which includes bus transportation, driver's tip and entrance fee to the show. Lunch is on your own.

*Friday October 16 is our annual shopping trip. The cost is \$40 which includes bus transportation, driver's tip and lunch. We stop at Sauders and the Kitchen Kettle for shopping and lunch is a great buffet at the Shady Maple.

All trips leave at 7:30 a.m. from the Park & Ride in front of the church and will return by 7 p.m.

If you are interested in going contact Sandy Lynch for day group and Glenda Kruger for night group

All checks are payable to MILLTOWN QUILTERS.

NEIGHBOR NEWS

From Severna Park,

Sheva has learned of an opportunity for classes by Philippa Naylor:

Philippa Naylor will be on her way to Paducah in April to feature workshops and is stopping in Maryland to give two machine quilting workshops. The workshops are

Free Motion Quilting with Trapunto

Saturday April 18th 10am - 5pm. \$60 (non AQG members)


Free Motion Feathers

Sunday April 19th 1 p.m. - 8 p.m. \$60.

The workshops are held at the Severna Park Community Center in Severna Park, MD. Her website is: <http://philippanaylor.com/> Check out her gallery - some gorgeous quilts there! The supply lists are on the AQG website <http://www.annapolisquiltguild.org/calendar.htm>. For more information contact alicetignor@acm.org.

410-647-9652 home 610-646-9652 eFax

From Frederick,



We Are An Official, Proud Promotional Partner for the

RICKY TIMS'

Super QUILT SEMINARS

With Special Guests
Alex Anderson
and
Libby Lehman

April 30- May 2, 2009
Maranatha Community
Church of God
Frederick, MD
hosted by
The Red Cross - Frederick County Chapter

Everyone attends all sessions

Information and registration brochures available at guild meetings, or online at www.rickytims.com

The Ultimate Learning Experience for Quilters!

FAT QUARTER BINGO

From Adrienne Phelan:

On Thursday, April 30th we're going to play some bingo.....quilter's style. You'll need to bring a fat quarter for each bingo card you'd like to play. For each additional card it will be an additional fat quarter. Your cards are good for all games. How many can you manage? Also bring enough markers to cover each card you plan to play, 25 per card. They can be pennies, beans, buttons, anything none permanent to mark the numbers called.

Please plan to arrive around 10:15 to exchange your fat quarter(s) for a bingo card or cards. Our first game will begin at 10:30. The lucky winners will be going home with a stack of fat quarters. So give it a try and join in the fun. As always the more the merrier.

EDUCATION

From Sheva Farkas

We will be hosting quilt artist and teacher Cynthia England for a lecture on Thursday, April 23rd at 11 a.m. The cost to non members is \$5. Members are free. She will be teaching two classes. On Friday, April 24th she will teach the pansy runner in fall or spring colors. The cost of the class is \$50. There are a few spaces in this class, so contact me as soon as possible if you want to take this beginning paper piecing class. On Saturday, April 25th she will be teaching a class on landscapes. There is a waiting list for this class, but it is short, so your chances of getting in are good. Both classes have pattern and kit fees. I have the patterns and will be bringing them to the guild meetings.

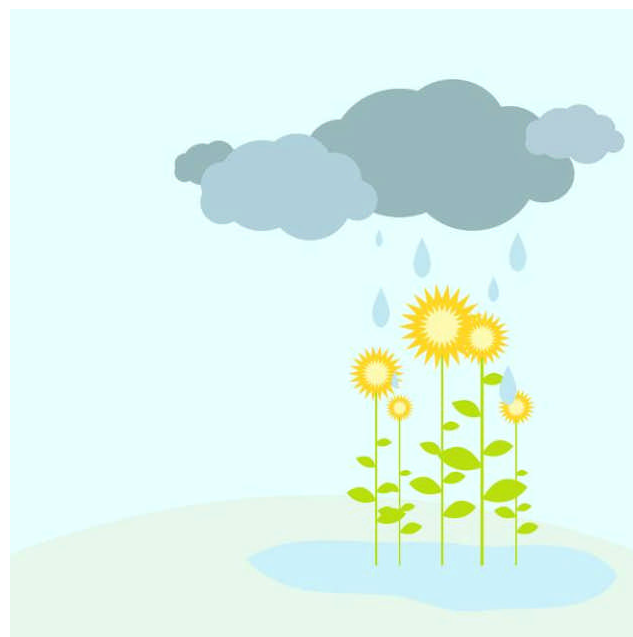
On May 7th Helen Squire, famously of "ask Helen" will be lecturing at 11 a.m.. She will also be teaching a class on UFOs on Saturday, May 9th. Helen's class is a wonderful chance

to have an expert evaluate any UFO you have and help you determine the quilting design and pattern. This is a hands-on class that will answer all your questions and entertain you. There are places available.

Finally, on Thursday, May 28th we will be hosting Frieda Anderson, whose work has been in Quilt Arts magazine among others. She will be lecturing at 10 a.m. (NOTE THE EARLY TIME) and will have a half day class from 1-4 p.m. The class will cost \$25.

Coming up next year will be Nancy Odom (October), our own talented Debra Gable (Feb., 2010) and Karen Kay Buckley (March 2010). We are also trying to schedule Susan Cleveland.

If you have any questions, contact Sheva Farkas at sbpowers@verizon.net. Support your education program. Sign up for classes and come to the lectures. Lectures are paid for by the Silent Auction money made at the Quilt Show.



BLOCK OF THE MONTH

Feb BOM Block #6



Hearts

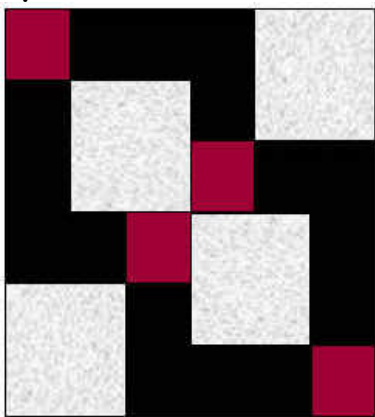
The winner is Maggie Nebel.

Mar BOM Block #7



Windmill or Double Star. The entries are looking very springish. Thur Apr 2 is the drawing.

Apr BOM Block #8



Disappearing Nine Patch

Now you may just ask, "Why is this a nine patch?"

April is tax time, so let's do black and white with a splash of red.

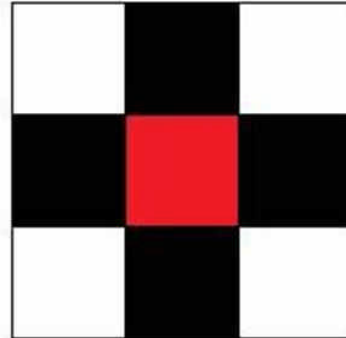
Fabric:

Cut 4" squares: 1 red, 4 (basically) white, 4 (basically) black.

Directions:

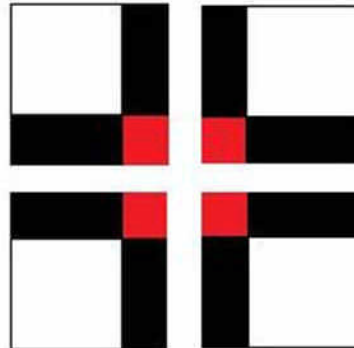
1. Stitch together as a nine patch with red in center, white in corners and black on sides (see A). Rows will be easier to align if seam allowances on each row are pressed towards the black squares before stitching the rows of three together.

A



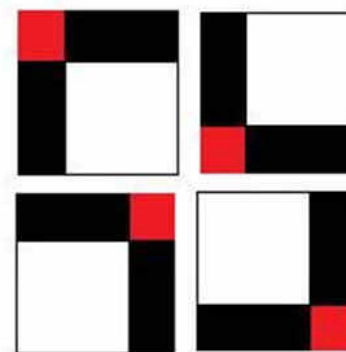
2. Cut square in half vertically and horizontally (see B).

B

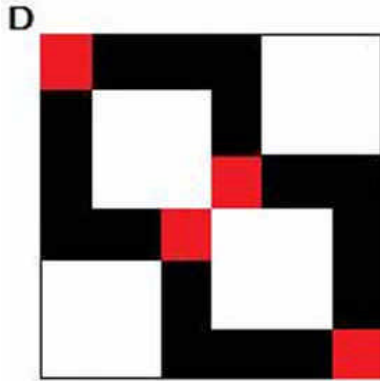


3. Rotate top left and bottom right pieces so the red is on the outside top left and bottom right corners (see C)

C



4. Stitch together the four pieces (see D).



The result will measure 10" (9 1/2" when finished).

Much more fun than the IRS 1040's, right?

CALENDAR

Apr 2 Love Quilts

Apr 3 Bus Trip - PA Quilt Show, reservation & fee

Apr 6 Love Quilts

April 13 Easter Monday - no Monday guild meeting

April 16 Milltown Quilt Show - no Thursday meeting

Apr 22 Caring Hands

Apr 23 Cynthia England lecture; guest fee \$5

Apr 24 Cynthia England class, reservation & fee

Apr 25 Cynthia England class, reservation & fee

May 4 Love Quilts

May 7, Helen Squire lecture 11 am

May 9, Helen Squire

May 14 Love Quilts

May 18 Elections

May 21 Elections

May 25 - Memorial Day - no Monday meeting

May 27 Caring Hands

May 28, Frieda Anderson lecture 10 am

May 28, Frieda Anderson afternoon class, fee and reservation

Jun 1 PARTY

Jun 4 PARTY

Jun 6 Board Meeting, 9am room 252

Jun 8 Love Quilts

Jun 11 Love Quilts

Jun 24 Caring Hands

July 27-31, Vacation Bible School

Aug 8 Sew-In, Christmas Stockings for the Church

Aug 31 end triple four patch

Sep 7 Labor Day - No meeting

Sep 18 Bus trip - PA National Quilt

Extravaganza XVI, reservation & fee

Oct 5 Silent Auction

Faithful Circle Quilters

Anne Kelly, Editor
P. O. Box 6231
Columbia, MD 21045

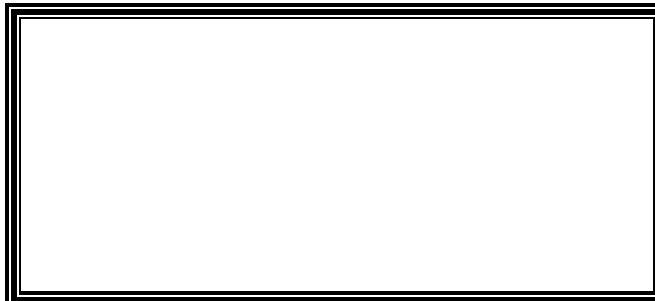
Email: editor@faithfulcirclequilters.com

Faithful Circle Quilters
welcomes anyone
interested in quilts and
quilting.

We meet on Monday
evenings
from 7 to 9 pm
AND

Thursday mornings
from
10 am to 2 pm
At the
First Presbyterian
Church on
Rt. 108 at Rt. 29
Columbia, MD

Please come join us and
visit our web site at
www.faithfulcirclequilters.com



Betty Kilroy April Birthday Party

02 Marylou McDonald
04 Angel Burba
05 Genie Corbin
06 Anna Norton
07 Carol Miller
12 Susan Schultz
12 Cyndy Ward
13 Susan Mann
14 Beth Cooper
14 George Hubble
15 Gayle Sternheim
15 Urmila Agarwal
16 Frani Klein
16 Margaret Ward

17 Helene Ross
17 Joanne Brazinski
19 Patricia Neal
22 Roberta Yaklich
24 Ellen Burns
25 Leigh Eirich
26 Shelley Beall
26 Vesta Ellerbe
28 JoAnn Adkins
28 Jennifer Tonex
29 Peggy Symes
30 Kathleen Werner