

The Circular

Vol. XXIV No. 6 The Newsletter of Faithful Circle Quilters

March 2006

President's Message

Dear Fellow Quilters,

It was great to walk around the Hampton Quilt Show and see so many members of Faithful Circle and I hope everyone enjoyed it as much as I did! The larger shows give us an opportunity to take classes from top instructors and browse through the vendor booths for unusual treasures. There is also the wonderful inspiration from the quilts on display. I must comment that after our recent demos on squaring and binding quilts so they will hang/lay flat I was amazed at how many ripples were found in the quilts that were accepted and displayed at this show. Ladies, our membership has as much (or maybe more?) skill, talent and creativity as I found at this juried show!

I'd like to thank all who took time to white glove and work at the raffle quilt table! There were many compliments about our quilt and I believe the ticket sales were better than we experienced in Ft. Washington.

Don't forget that we will be voting on the proposed changes to our Policies on March 20th and March 23rd. A copy of the changes can be found on the table during meetings.

Freda Atkins gave us a tour of her sewing room and I picked up a great hint for you. She uses one of the shoe storage bags (the kind that look like a garment bag with clear plastic pockets) to store her scraps of fabric. She has it hanging from the back of the door and sorts the scraps by color. It makes a very easy way to find just the right little piece when doing appliqué work, yet they are neat and out of the way.

FCQ Officers

President
Irma Bast

Thursday

Vice President
Monica Thomas
Secretary
Lauren Swanger

Treasurer
Carolyn May

Monday

Vice President
Nancy Evans
Secretary
Emilie Sadowsky
Treasurer
Carol Roberts

Irma Bast
President

Nominating Committees Announce Slate of Officers

The Nominating Committees (Day: Carolyn May & Barbara Laskowski, Evening: Irma Bast & Susan Hammond) are pleased to announce the following proposed slate of officers for the 2006-2007 year:

<i>President:</i>	Nancy Evans
<i>Day: Vice President</i>	Monica Thomas
<i>Treasurer</i>	Lynne Douglas
<i>Secretary</i>	Carol Petranek
<i>Evening: Vice President</i>	Sharon Rhoton
<i>Treasurer</i>	Eleanor Moland
<i>Secretary</i>	Julia Graves

Following the Bylaws, nominations from the floor are to be taken the third week of April. However, we can't meet on that week because of Easter Monday (church is closed) and the Quilt Show. Since we have this much advance notice, we will **finalize the nominations** the second week of April, on **April 10th** for the Evening Group and on **April 13th** for the Day Group.

Quilt Show News

It is hard to believe, but the show is less than two months away. The committees are hard at work and much has been accomplished. Now is the time that we will begin to ask the general membership to pitch in.

First of all, please remember to volunteer! Our success depends on everyone's participation and it is a wonderful time to meet other guild members and get involved. Carol Petranek is the Quilt Show's Volunteer Coordinator. She can be reached at carol.petranek@verizon.net.



There will be sign-up sheets at guild meetings. Or you can get in touch with Carol or with the individual committee chairs.

Second, don't forget to register your quilt(s) to

hang in the show. This is the perfect opportunity to showcase your work. Registrations are scheduled at both the day and evening meetings on the following dates:

Day Group

March 3rd
March 20th FINAL

Evening Group

March 9th
March 23rd FINAL

Remember that you must bring your quilt to be photographed when you register it, and that it must be completed at the time of registration. Forms for registration, the Peddlers' Table and the Silent Auction are available at the FCQ website and hard copies are in the FCQ cabinet.

Peg McClellan hopes everyone is working on something for the Silent Auction. This is always a marvelous event for the show and it is wonderful to



see what everyone has donated. Please bring your finished items in to Show and Tell as an inspiration to the rest of us. Entries can be almost anything that will appeal to our visitors. In the past we have had wall hangings, small quilts (large quilts are OK, but they are challenging to display), dolls, bears, table runners, placemats, pillows and sewing accessories. Proceeds from the silent auction fund our future education programs.

We need everyone to be selling raffle tickets. Margo Cramer is coordinating the ticket sales. Please see her to get your tickets. Also, a special Thank You to everyone who has taken the quilt to other venues. Please see Maureen Craig if you can take the quilt on future visits.

Remember, now is the time to clean out your sewing room and make a little fabric money by getting your Peddlers' Table items ready for the Quilt Show. If you would like, you

can donate your unwanted or unused quilt-related items to the guild and the proceeds of the sales will go into our Education Fund.

We also need everyone to be publicizing the show. One way to do this is to pass out flyers to friends and colleagues, or to take them to quilt shops, libraries or other places where potential visitors will see them. You can get flyers from Joan Groves.

Decorating Committee Requests

Ladies, it's that time again! The quilt show will be here before you know it. We are



looking for decorations that will enhance the beauty of our wonderful quilts. As in past years, we would like to get donations of: all things country, baskets, old children's toys, dolls, old photos, small old pieces of furniture (doll- or child-size),

stuffed animals, teddy bears, old linens, or anything old. But please note, the decorations are NOT included in the insurance coverage so if you can't afford to lose it, please don't bring it. We've had very good luck with our decorations with only one incident several shows ago. So search your closets and all those nooks and crannies for those special things that will make our quilts look beautiful.

Sandy McDonald will have the forms and numbered tags at the meetings. Decorations can be brought in the morning of the day of set up. She will be there to check you in. If you have any questions, please do not hesitate to call me (410-461-4337) or speak with her at the meetings.

Education - Coming Classes

Class - Spinning Wheels, Gyleen Fitzgerald

Gyleen Fitzgerald is teaching a new class called Spinning Wheels (see

<http://www.colourfulstitches.com> under lectures for a description.) This is not an FCQ sponsored class so Nancy will not be taking sign-ups. Gyleen is looking for an "active class" to help her work out any kinks, should there be any, in an initial class. The class will be March 25th at Holy Trinity Church in Churchville. The cost is \$20 which includes the pattern and is a great price. To sign up by send a check to Gyleen at:

P.O. Box 247

Havre de Grace, MD 21078.

If you need more information you can email Gyleen through her web site.

Another note from Gyleen: She will be posting in the next few weeks a download free to guilds that she has visited in 2005 or 2006. It's a free Block of the Month called Canal Street Tiles. The supply list gets posted this month with one general instruction that will be needed for all the blocks.



For Lois Smith's class please add the room number, 154. Carol Roberts will be the hostess for Lois's class since Nancy will be away. If you have any questions on the class please contact Carol.

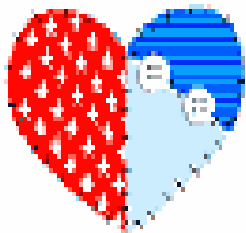
Bus Trips

There are 3 bus trips scheduled for 2006. 1. Friday April 7, Quilters Heritage Quilt show in Lancaster, PA. Cost is \$43.00 which includes bus fee, driver's tip and entrance ticket. 2. Friday September 15, Pennsylvania National Quilt Extravaganza XIII in Fort Washington, PA. Cost is \$43.00 which includes bus fee, driver's tip and entrance ticket. 3. Friday October 6

Shopping trip to Souders, lunch at Shady Maple and shopping at Zooks and the Kitchen Kettle area. Cost is \$43.00 which includes bus fee, driver's tip and lunch at Shady Maple. Remember the trips to Lancaster and Fort Washington do not include lunch, you may buy your lunch there or bring your lunch as the bus stays with us and the driver will have the bus open for an hour around lunchtime so you can return to the bus for your lunch. We are taking sign-ups and checks now. Be sure that the checks are made out to Miltown Quilters. Leah Hurwich and Jean Webster will be accepting names and checks. Remember there is a new coordinator at Miltown and she would like to have your payment in full, a month before the trip. Jean's number is 240-568-9746, and new e-mail is jwebster222@comcast.net. Leah's number is 410-730-2334 and her e-mail is melh310@comcast.net.

Love Quilts

The first Monday night meeting of each month will be full of fun, fellowship, service and sweets. We're adding desserts to our monthly Love Quilt night! Enjoy various desserts prepared by your fellow members while you're helping to tie and label Love Quilts. Love Quilt kits will be available at every meeting. Kits include fabric squares to make a small quilt, along with directions. There is no deadline for return the finished tops. Just finish them as you have some free time available. Finished tops are returned to Maria O'Haver at any meeting.



Retreat Information Coming Soon

This year's retreat will be held at the Town Hill Bed and Breakfast in Little Orleans, MD July 14-16. Maria O'Haver will be our teacher and we're all excited!!!! More info

will be available at the meetings and in the next bulletin.

Betty Kilroy March Birthday Party



- 01 Joan Groves
- 03 Jean Savalchak
- 03 Bonnie Tester
- 07 Barbara Laskowski
- 09 Helen Massare
- 11 Cynthia Porter
- 14 Bonnie Stapleton
- 15 Georgia Morris
- 16 Eleanor Moland
- 18 Nancy Clark
- 18 Kristine Fisher
- 20 Virginia Wray
- 26 Darlys Hughes

BOM

Congratulations to Peggy Duke! Peggy won our February block "For the Birds". Jump into "It's a Dog's Life" our April BOM. Piece or appliqué a 12 inch finished (12 ½ unfinished) block featuring a dog(s) and the things that they love. Background fabric should be green. Look in the BOM file box for directions for "Simon the Puppy" (there is only 1 set of directions; please copy or use quickly (no more than a week) or use the appliqué pattern I've used for my doggy block. June's "At the Beach" has patterns provided; please check the white envelope in the BOM box. Our March "Into the Woods" blocks winner will be posted in the April newsletter.

Faithful Circle Quilters

Beth Allendoerfer, Editor
P. O. Box 6231
Columbia, MD 21045
Email: editor@faithfulcirclequilters.com

Faithful Circle Quilters
welcomes anyone
interested in quilts and
quilting.

We meet on Monday
evenings
from 7 to 9 pm
AND
Thursday mornings
from
10 am to 2 pm
At the
First Presbyterian
Church on
Rt. 108 at Rt. 29
Columbia, MD

Please come join us and
visit our web site at
www.faithfulcirclequilters.com



Mar 2	Love Quilt Tying
Mar 6	Love Quilt Tying and Dessert
Mar 11	Lois Smith Class
Mar 23	Quilt Registration Ends
Mar 27	Deadline for newsletter
Apr 3	Love Quilt Tying and Dessert
Apr 6	Love Quilt Tying
Apr 7	Quilter's Heritage Bus Trip
Apr 10, 13	Finalize Nominations
April 18-19	Quilt Show Setup
Apr 20-22	Quilt Show
May 1	Love Quilt Tying and Dessert
May 6	Love Quilt Tying
May 13	Gyleen Smith
July 14-16	Retreat